

Easy operation & exchanging materials and various ways of use

Volumetric Blender

BLE series



Easy operation & exchanging materials and various ways of use

Volumetric Blender

BLE series



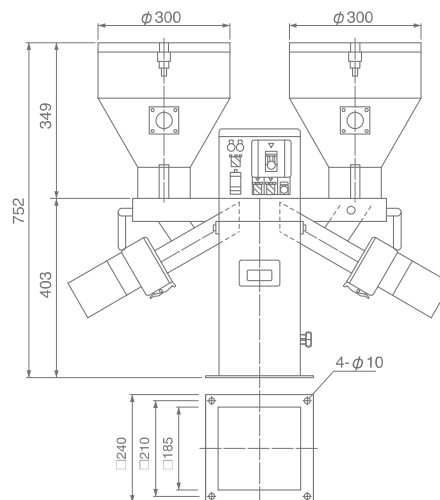
Mixing Capacity 200Kg/Hr 2 Components, 3 Components and 4 Components

Specifications

Name	Volumetric 2 Components	Volumetric 3 Components	Volumetric 4 Components
Model	BLE-220	BLE-320	BLE-420 (Special ordered)
Power Supply	AC200V±10% (50/60Hz) with single phase ground		
Consumption	75W+Moter (W × 2)		
Capacity	200kg/Hr		
Hopper Capacity	Hopper A 10L, Hopper B 10L, Hopper C 10L, Hopper D 10L		
Mixing Ratio	Material A 100%, Material B 50~100%, Material C 0~20%, Material D 0~20% Mixing Ratio is decided after discussion.		
Mixing Accuracy (Materials)	±5% (Material Dimension $\phi 2 \sim 2.5 \times L2 \sim 4\text{mm}$ /Bulk specific gravity 0.5 ~ 0.7)		
Alarm	Each hopper A, B, C and D stops automatically when materials are in short. Alarm alerts in materials shortage and AC 200V comes out from terminal block.		
Motor	For material A 25W, material B 25W, material C 25W and material D 25W		
Weight	Approx. 39kg	Approx. 51kg	Approx. 63kg
Dimension	881(W)300(D)752(H)	881(W)560(D)752(H)	881(W)820(D)752(H)

1. Level sensor for the demand signal of material is attached.

2. In case of 4 compounds blending, control box is placed separately. (Custom made)



Options:

Agitator can be mounted to get rid of BRIDGE material (granulated one).

Materials conveying loader is available.

Capacity over 200kg/Hr is available on request.

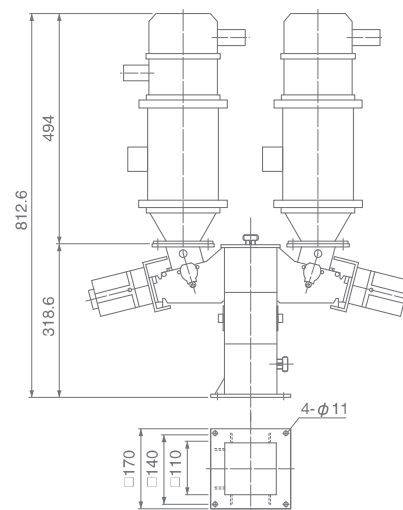
Mixing capacity 50Kg/Hr 2 Components, 3 Components and 4 Components

Specifications

Name	Volumetric 2 Components	Volumetric 3 Components	Volumetric 4 Components
Model	BLE-205	BLE-305	BLE-405
Power Supply	AC200V±10% (50/60Hz) single phase with earth		
Consumption	75W+Moter (W × 2)		
Capacity	50kg/H · A+B		
Hopper Capacity	Hopper A 1L, Hopper B 1L, Hopper C 1L, Hopper D 1L		
Mixing Ratio	Material A 100%, Material B 50~100%, Material C 0~20%, Material D 0~20% Mixing ratio is decided after discussion.		
Mixing Accuracy (Materials)	±5% (Material dimension $\phi 2 \sim 2.5 \times L2 \sim 4\text{mm}$ /Bulk density)		
Alarm	Each hopper A, B, C and D stops automatically when materials are in short. Alarm alerts in materials shortage and AC 200V comes out from terminal block.		
Motor	For material A 25W, material B 25W, material C 25W and material D 25W		
Weight	Approx. 39kg	Approx. 51kg	Approx. 63kg
Dimension	694(W)185(D)823(H)	694(W)440(D)823(H)	694(W)695(D)823(H)
Dimension (control board)	190 (W) 220 (D) 160 (H) / Approx. 4.5kg		

1. Blended materials demanding signal level sensor is attached.

2. Control box is put separately.



Colors of the images might be slightly different from the actual products.

Specification and standard are subject to change without notice.

BC09-1-00040-00IN
2017.2.24



SEMCO INTERNATIONAL CO., LTD.

Headquarters TEL +81-82-928-8646 1609-3 Kamigouchi, Itsukaichi-cho, Saeki-ku, Hiroshima 731-5151, Japan
 Tokyo office TEL +81-48-257-3750 4-6-18 Iizuka, Kawaguchi-shi, Saitama 332-0023, Japan
 Korea office TEL +82-41-522-2132 #302, 5-36 Tongjeong 6Ro, Dongnam-Ku, Cheonan, Chungnam
 Thailand office TEL +66 2196 1881 EÜR Group Building 600/11 B-Square Param 9, Soi Sahakarnpramul, Prachauthit Road, Wangthonglang, Bangkok 10310 Thailand

<http://www.semcointer.com/>
<http://www.semco.jp/>