

Super compact micro-computer blender for injection molding machine

Gravimetric Blender

MBG series



Blend



emco

Super compact micro-computer blender for injection molding machine

Gravimetric Blender

MBG series

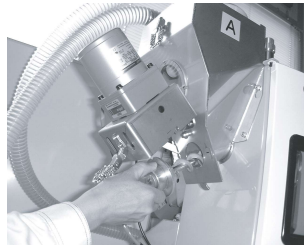


Blend

Easy cleaning & Easy material change!



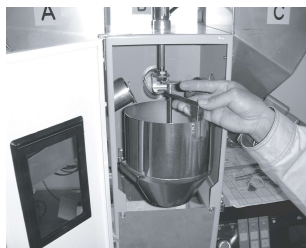
Loader cleaning



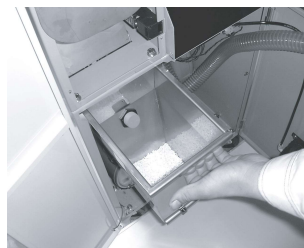
Blended material tank cleaning



Material discharge from hopper



Weighing case cleaning



Secondary tank cleaning



Dust collection filter cleaning

■ Specification

		MBG-2005 (2 components)	MBG-3005 (3 components)
Power supply		AC200V±10% (50/60Hz) 15A	
Consumption	Main	400W (50/60Hz)	
	Loader	0.55/0.85kW (50/60Hz)	
Air source		Air Pressure 0.4MPa or more	
Capacity		50kg/Hr (MAX.)	
Accuracy		±1.0% Full scale	
Max. weighing		700g/batch	
Outside dimension		775 (W) × 570 (D) × 1,630 (H)	
Installation dimension		800 (W) × 570 (D)	
Weight		125kg	
Control		Microcomputer Control	
Weighing		Batch type weighing with load cell for all materials	
Feeding		Material feeding by screw	

■ Features

- Super compact and reasonable price
- Easy cleaning structure (easy material change)
- Total material consumption is displayed
- Weighing accuracy ±1.0% full scale
- Equipped with blower motor for conveyance.

■ Option

- Secondary conveying to injection molding machine
- Panel display in English.
- Air mixing machine on molding machine.
- Alarm light

- Colors of the images might be slightly different from the actual products.
- Specification and standard are subject to change without notice.

BC15-1-00069-00IN
2016.4.20



SEMCO INTERNATIONAL CO., LTD.

Headquarters TEL +81-82-928-8646 1609-3 Kamigouchi, Itsukaichi-cho, Saeki-ku, Hiroshima 731-5151, Japan
 Tokyo office TEL +81-48-257-3750 4-6-18 Iizuka, Kawaguchi-shi, Saitama 332-0023, Japan
 Korea office TEL +82-16-287-2132 2001 Sambu Renaissance Home 72, 494-1 Shinbu-Dong, Dongnam-Ku, Cheonan City, Chungnam, 330-943, Korea
 Thailand office TEL +66 2196 1881 EUR Group Building 600/11 B-Square Praram 9, Soi Sahakarnpramul, Prachautit Road, Wangthonglang, Bangkok 10310 Thailand

<http://www.semcointer.com/>
<http://www.semco.jp/>